

# Bootloader update to execute firmware updates with Windows 8.1 / Windows 10

It is partially not possible to execute a firmware update with Windows 8.1 / Windows 10 for the following measurement devices:

- testo 330 LL v2010
- testo 350 v2010 Control Unit
- testo 350 v2010 Analyzer Box
- testo 320

This can be solved by installing the new Bootloader version 1.21 once. Afterwards it is possible to execute the firmware updates as usual.

## Structure of this document:

As the update process differs between the analyzers and partially requires other update files, the chapters 2a), 2b) and 2c) of this manual features the differences between the measurement devices. Please choose the suitable chapter for your analyzer.

This document has the following structure:

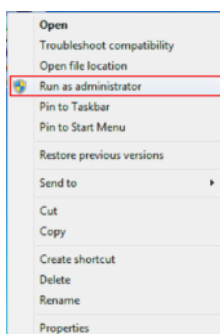
- 1) Activation of the file **Start.bat**
- 2a) Execution of the update for **testo 330 LL** und **testo 350 Control Unit**
- 2b) Execution of the update for **testo 350 Analyzer box**
- 2b) Execution of the update for **testo 320**
- 3) Activation of the file **End.bat**

Going through the chapters 1) and 3) is necessary for every measurement device.

**Please close all other applications and und save all open files, because a restart of the PC is done during the update process.**

## 1) Activation of the file Start.bat

1. If your measuring instrument is connected to your PC, please disconnect the instrument.
2. Open the file **Start.bat** with right click and choose „**Run as administrator**“



3. After execution of the file you will be asked to press any key to restart the PC. Please make sure that you save all open files before restarting the PC.

## 2a) Execution of the update for testo 330 LL, testo 350 Control Unit

1. Unplug the mains unit and switch off the instrument.
2. Press button [▲] on the instrument.
3. Plug in the mains unit in the measurement device and keep button [▲] pressed.  
→ The display shows „Firmware update“ along the bottom edge.
4. Release button [▲].
5. Insert the USB connection cable (0449 0047) in the measurement device and connect it to the PC.  
→ the device is recognized as removable data medium
6. Check if there is the folder „SystemVolumeInformation“ on the data medium  
→ **If the folder is there, please delete it!**
7. Copy now the new Bootloader (file *bootrel.bin*) to the detected removable medium.  
→ In the display a status bar progresses from left to right to show that the update process is ongoing. This may take a few minutes.
8. After the Bootloader has been updated, the measurement device will automatically reboot.  
→ Disconnect the USB connection cable from the instrument

## 2b) Execution of the update for testo 350 analyzer box

1. Disconnect mains plug.
2. Place the analyzer box on its front.
3. Open the cover of the sensor compartment (locking clip) and take it off.
4. Hold the button at slot 3 carefully depressed with a pointed tool.
5. Plug in the mains plug, keep the button depressed.  
→ The status display flashes alternately green and red.
6. Release the button.
7. Plug the connecting cable (Art.-No. 0449 0073) into the USB-port on the analyzer box, then connect it to the PC.  
→ Your PC recognizes the analyzer box as a removable medium.
8. Check if there is the folder „SystemVolumeInformation“ on the data medium  
→ **If the folder is there, please delete it!**
9. Copy now the new Bootloader (file **bootref.bin**) to the detected removable medium.  
→ The status display flashes alternately green and red. This process may take a few minutes.
10. Remove the connecting cable from the analyzer box 350.  
→ After updating the Bootloader has been completed the analyzer box will automatically reboot.

## 2c) Execution of the update for testo 320

1. Unplug the micro USB cable and switch off the measurement device.
2. Plug micro USB cable into the PC.
3. Press button [▲] on the instrument.
4. Plug in the micro USB cable in the measurement device and keep button [▲] pressed.  
→ The display shows „Firmware update“ along the bottom edge.
5. Release button [▲]  
→ the device is recognized as removable data medium
6. Check if there is the folder „SystemVolumeInformation“ on the data medium  
→ **If the folder is there, please delete it!**
7. Copy now the new Bootloader (file **bootref.bin**) to the detected removable medium.  
→ In the display a status bar progresses from left to right to show that the update process is ongoing. This may take a few minutes.
8. After the Bootloader has been updated, the measurement device will automatically reboot.  
→ You can now disconnect the micro USB cable from the instrument

## 3) Activation of the file End.bat

Open the file **End.bat** with right click and choose „**Run as administrator**“

Now a firmware update can be executed normally as described in the manual of the measurement device.